





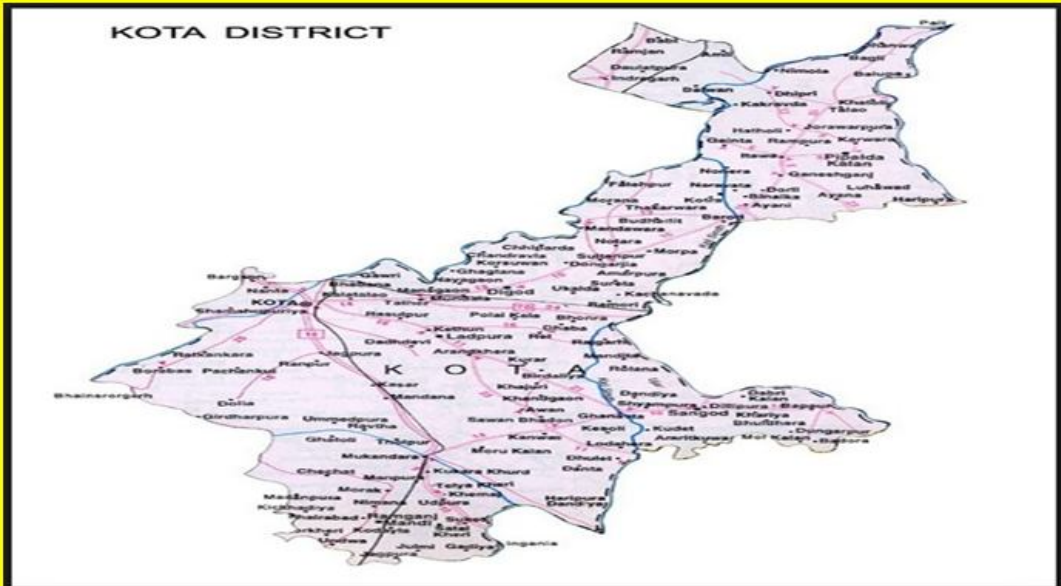
(A)



(B)



LOCATION MAP



Surveyed Localities of Kota District





(A)



(B)



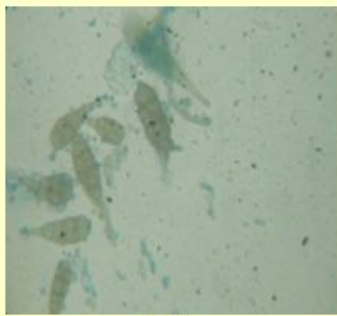
(C)



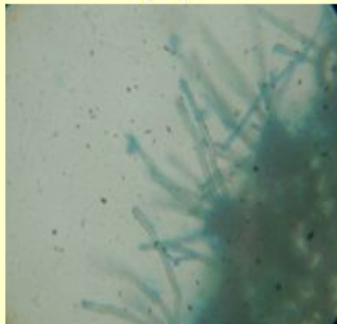
(D)



(E)



(A)



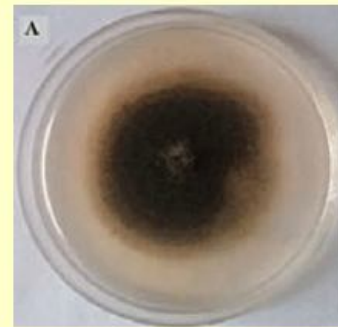
(B)



(C)



(D)



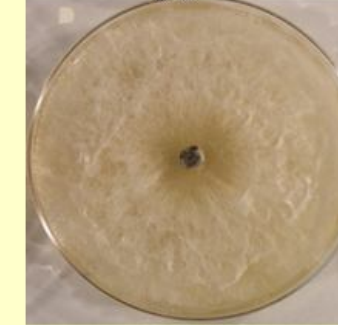
(a)



(b)



(c)



(d)



Intercropping of Fenugreek with Allium sativum



**Soil drenching by Ash as a protective measure
used by farmers**



(A)



(B)



(C)



(D)



(E)

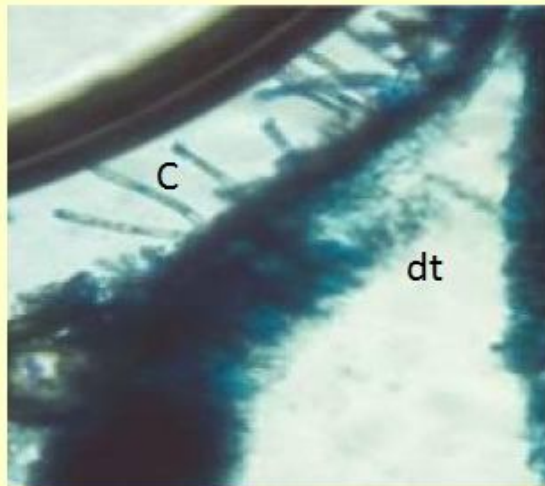


(F)

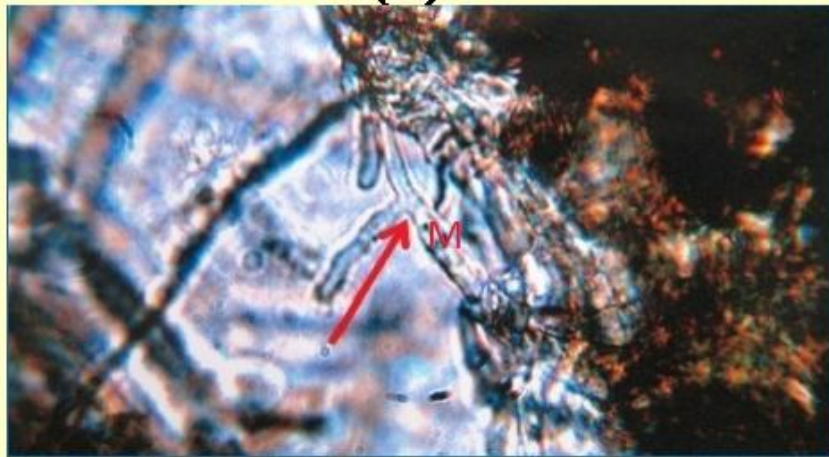


(G)

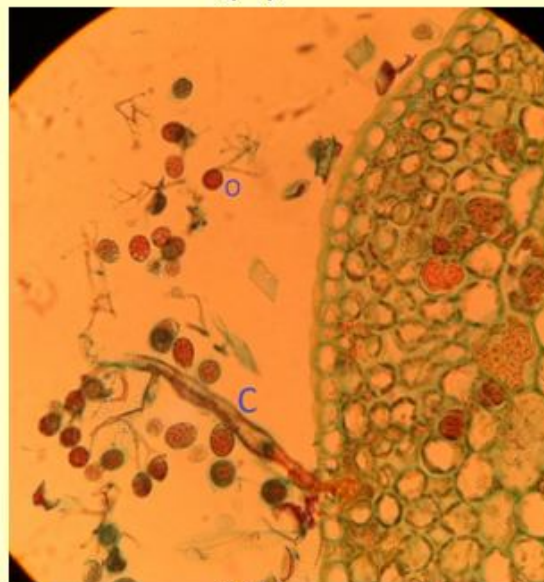




(A)



(B)



(C)



(A)



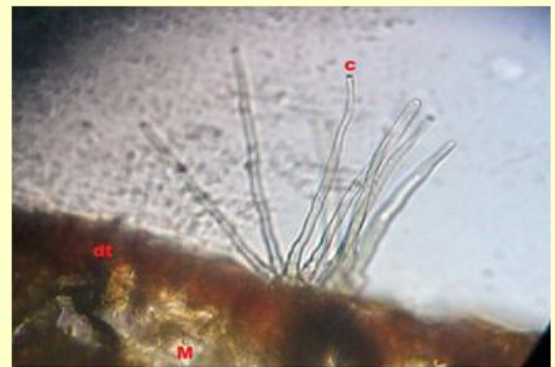
(B)



(C)



(D)



(E)



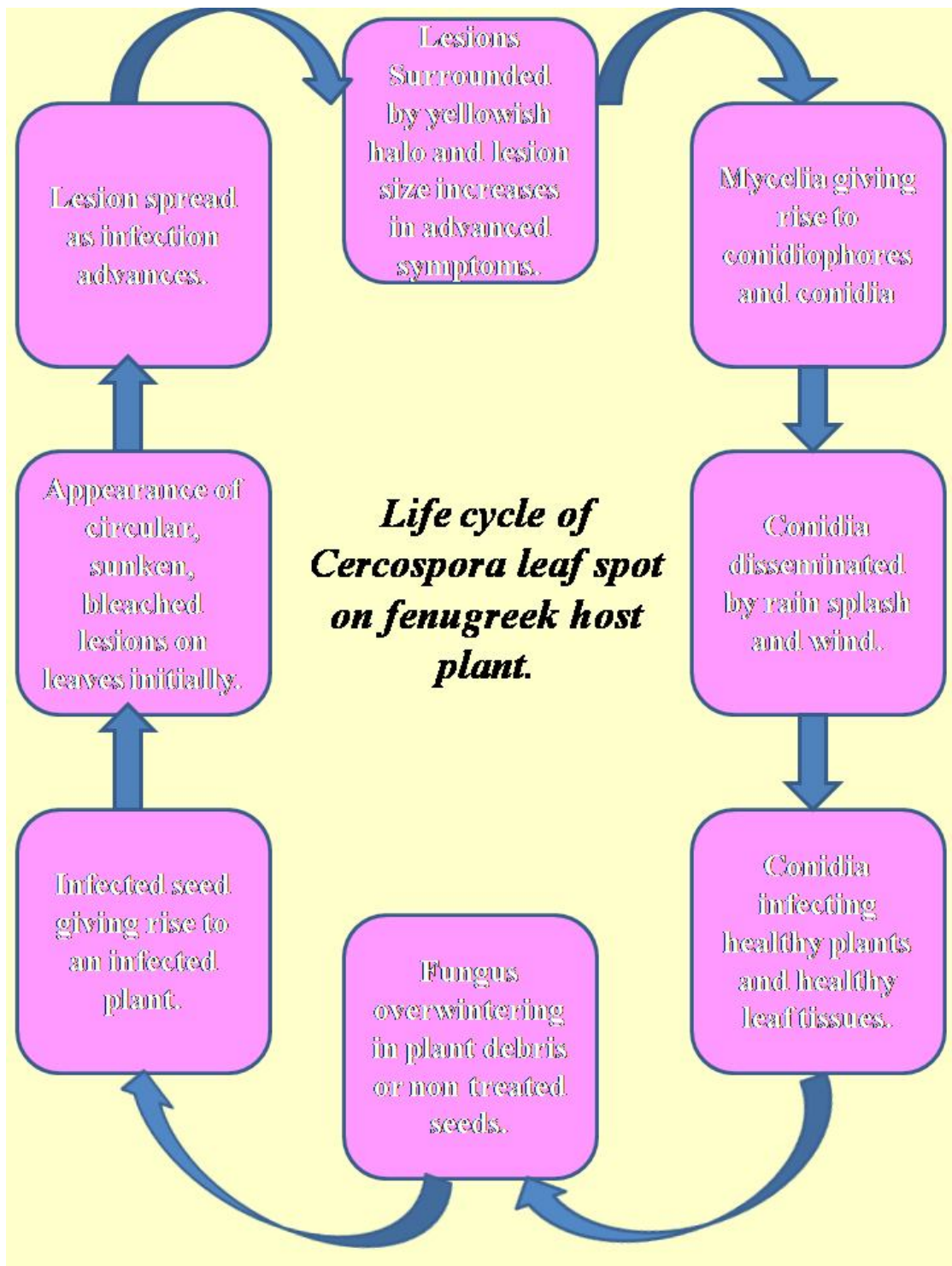
A

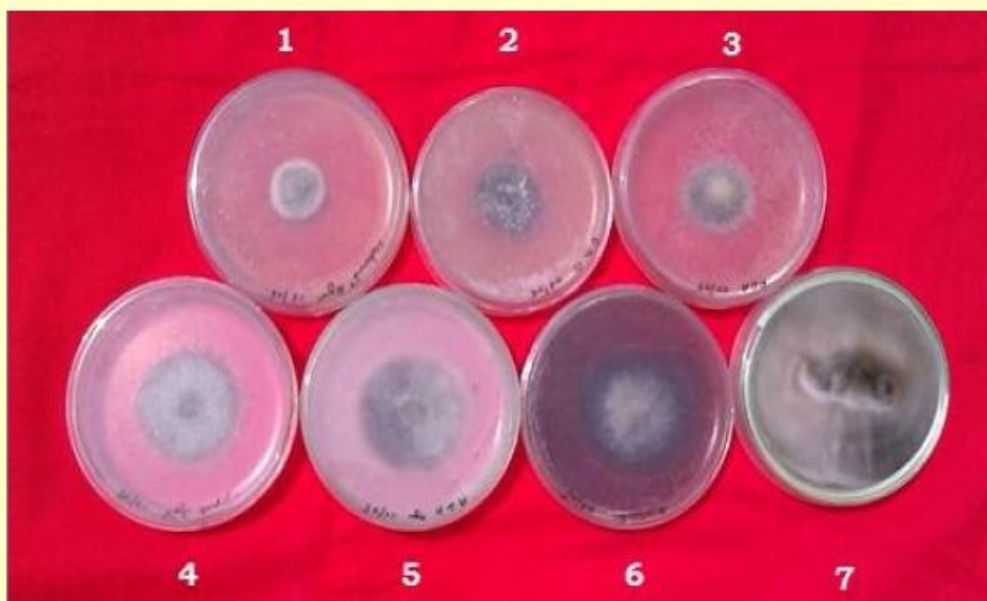


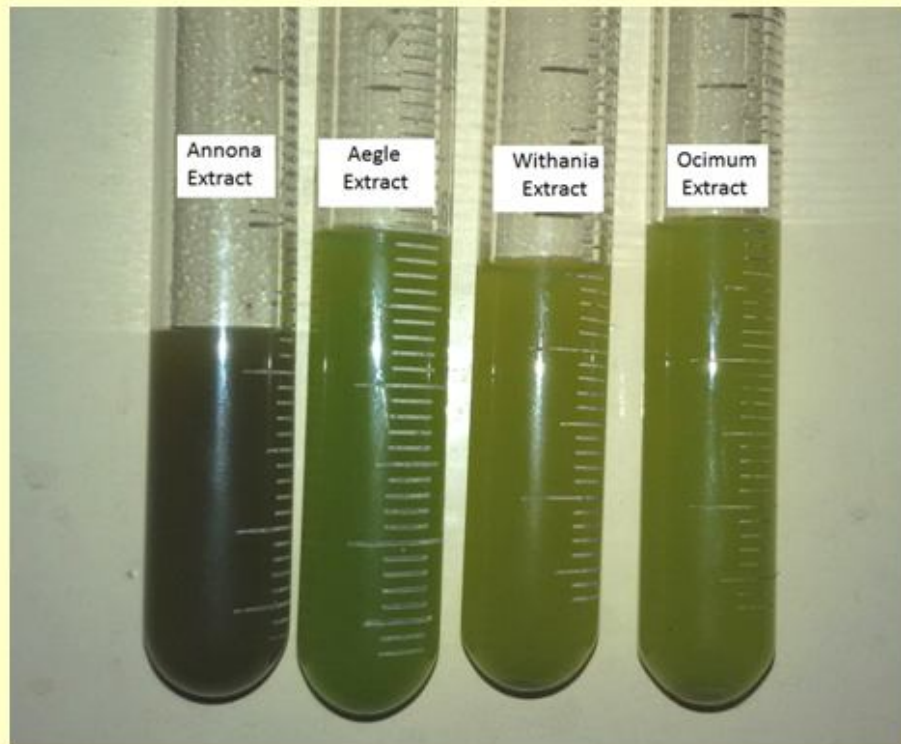
B



C







Botanicals as Control Agent



Seedlings in Pot Trials



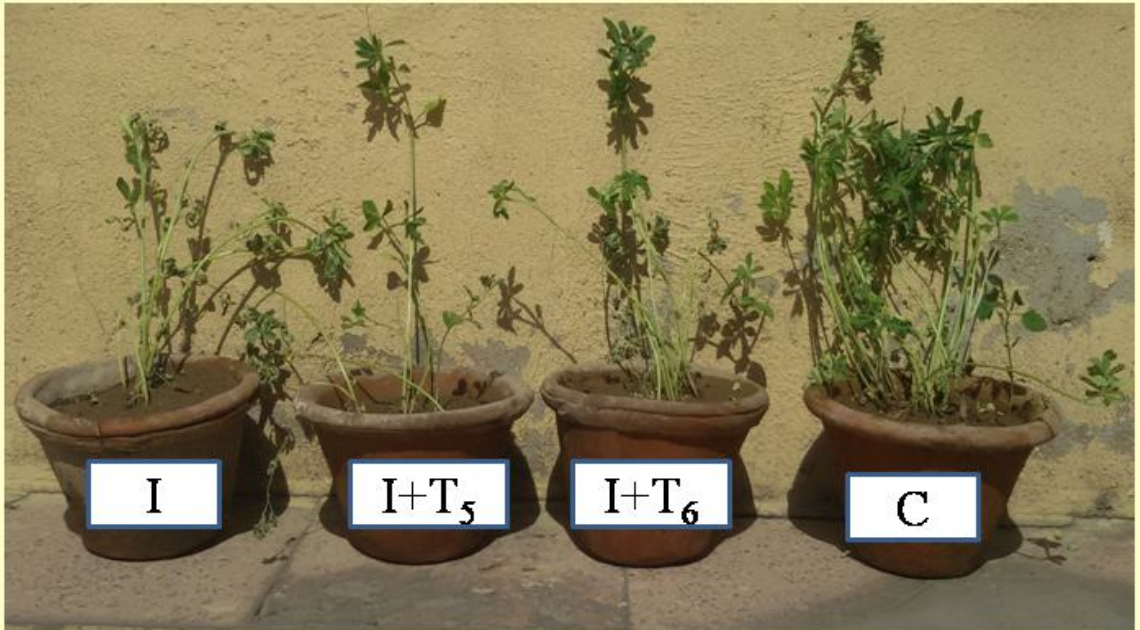
In Vitro Evaluation through different Botanicals against *C. traversiana*



In Vitro Evaluation through Bioagent against *C. traversiana*



Treated With Botanicals



Treated with Bioagents



RMT-1



RMT-143

RMT-303



HISAR SONALI



RMT-305





Development of Leaf Spot on Fenugreek Leaves